

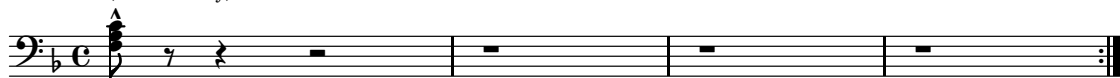
Nine to Five

C Melody

Dolly Parton

Vamp

(2nd time only)



29

33

1. 2.

Detailed description: This image shows a musical score for two staves, measures 29 through 33. The key signature is one flat (B-flat). The first staff (measures 29-32) begins with a B-flat note, followed by a series of eighth and quarter notes, including a triplet of eighth notes. The second staff (measures 33-36) continues the melody with various note values and rests, ending with a double bar line and a repeat sign. The first ending (1.) and second ending (2.) are indicated above the final measures.